

# COVID-19 Testing

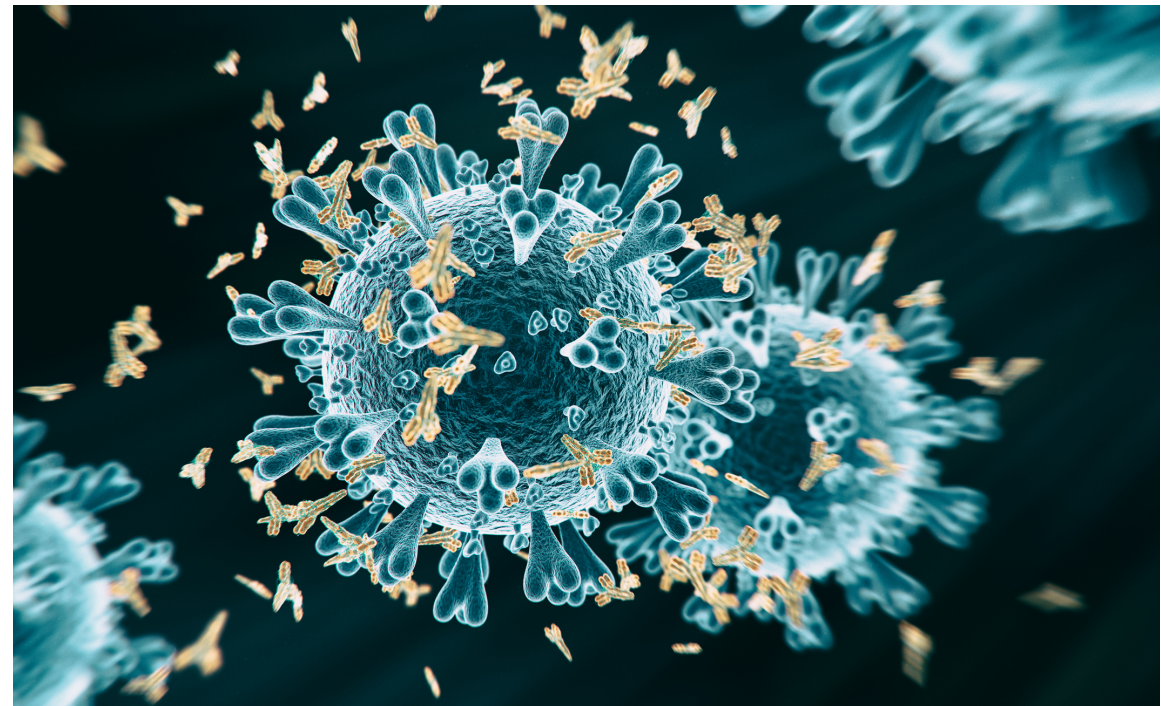
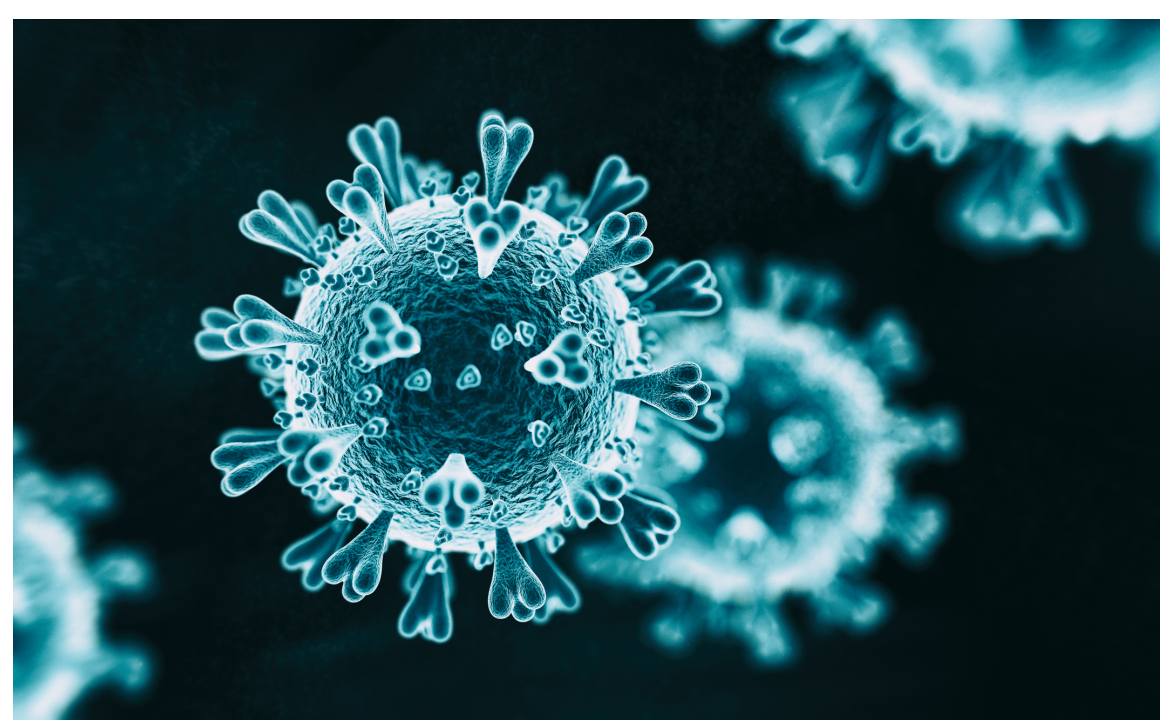
---

Back to work webinar

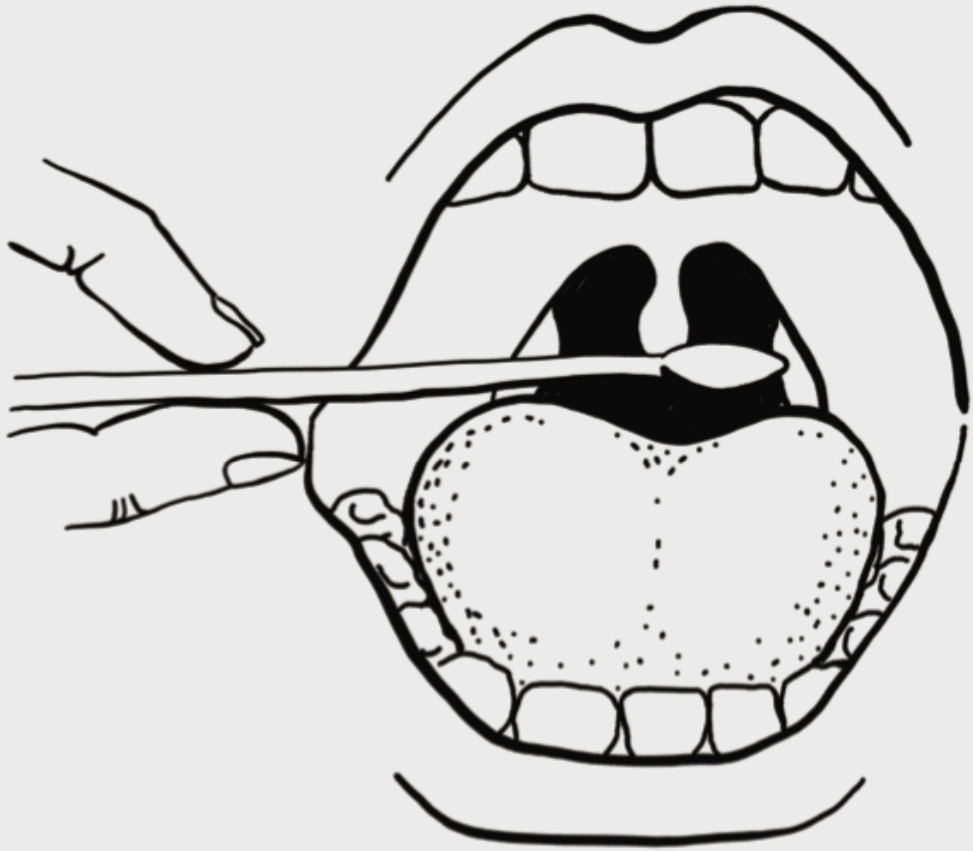
**FORTH**<sup>®</sup>

## Two main types of testing

- HAVE I GOT COVID-19  
(Antigen – PCR test)
- HAVE I HAD COVID-19  
(Antibody test)



# Swab sample from throat and nose



## Have I got Covid-19?

### What

PCR Swab test analysed at lab

### When

5 days of symptoms developing

### Who

NHS & essential key workers are prioritized. Is open to public part of test, trace, product strategy but daily quotas in place.

### Where

- Postal and drive-through test centres.
- Private tests available online from £125+

### Why

- Indicate if a person needs to continue to self-isolate
- Can return to work

### Accuracy

66%-80% sensitivity – 1 in 3 could receive false negative.

# Antibody Testing

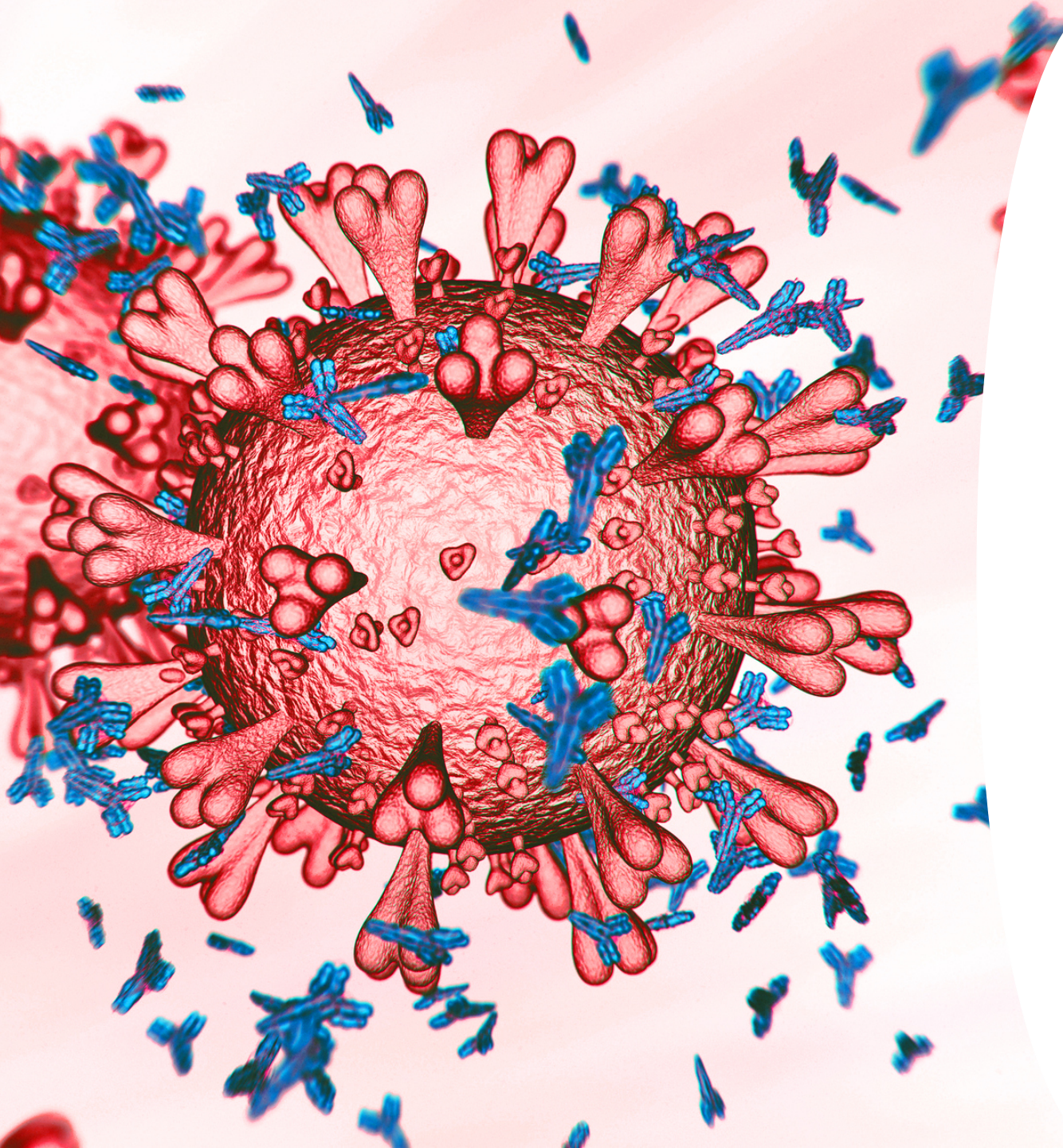
This test measures the body's antibody response to the COVID-19 virus post-infection.

The body develops two kinds of antibodies: response to COVID-19 infection known as

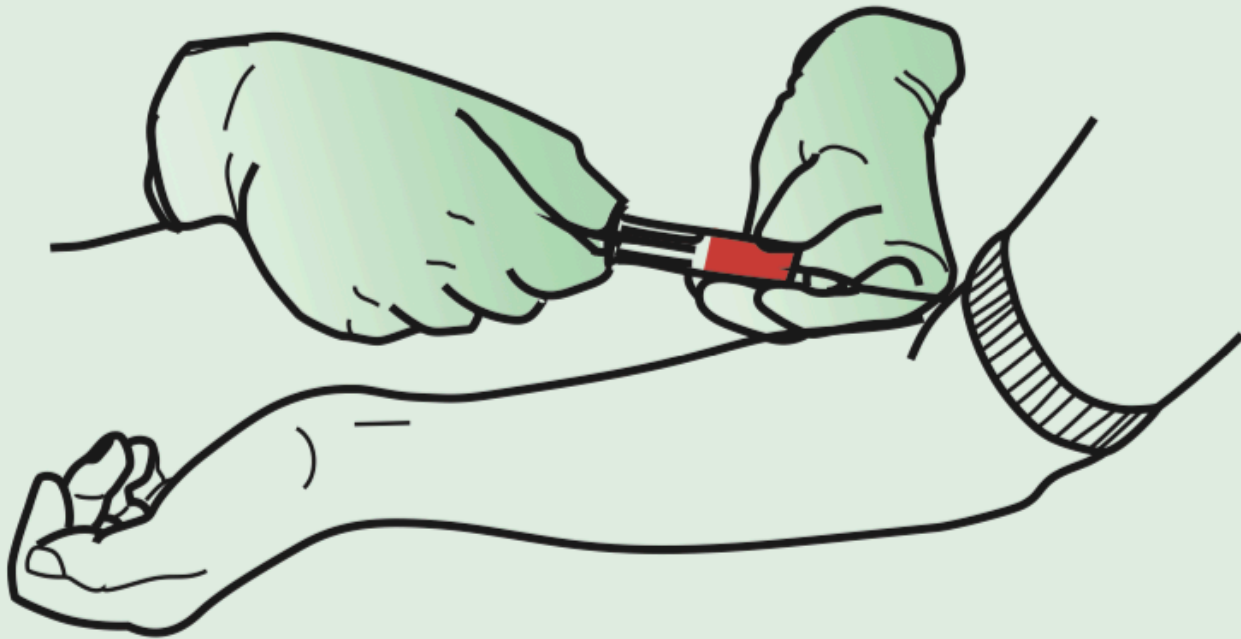
- IgM (first to form)
- IgG (lasts longer)

Two test assays currently approved by UK Gov:

- Roche
- Abbott



# Blood test taken by a medical professional



## Have I had COVID-19?

### What

Venous antibody blood test analysed at lab

### When

21 days post symptoms developing

### Who

NHS is limited to NHS and social care staff. Private options available.

### Where

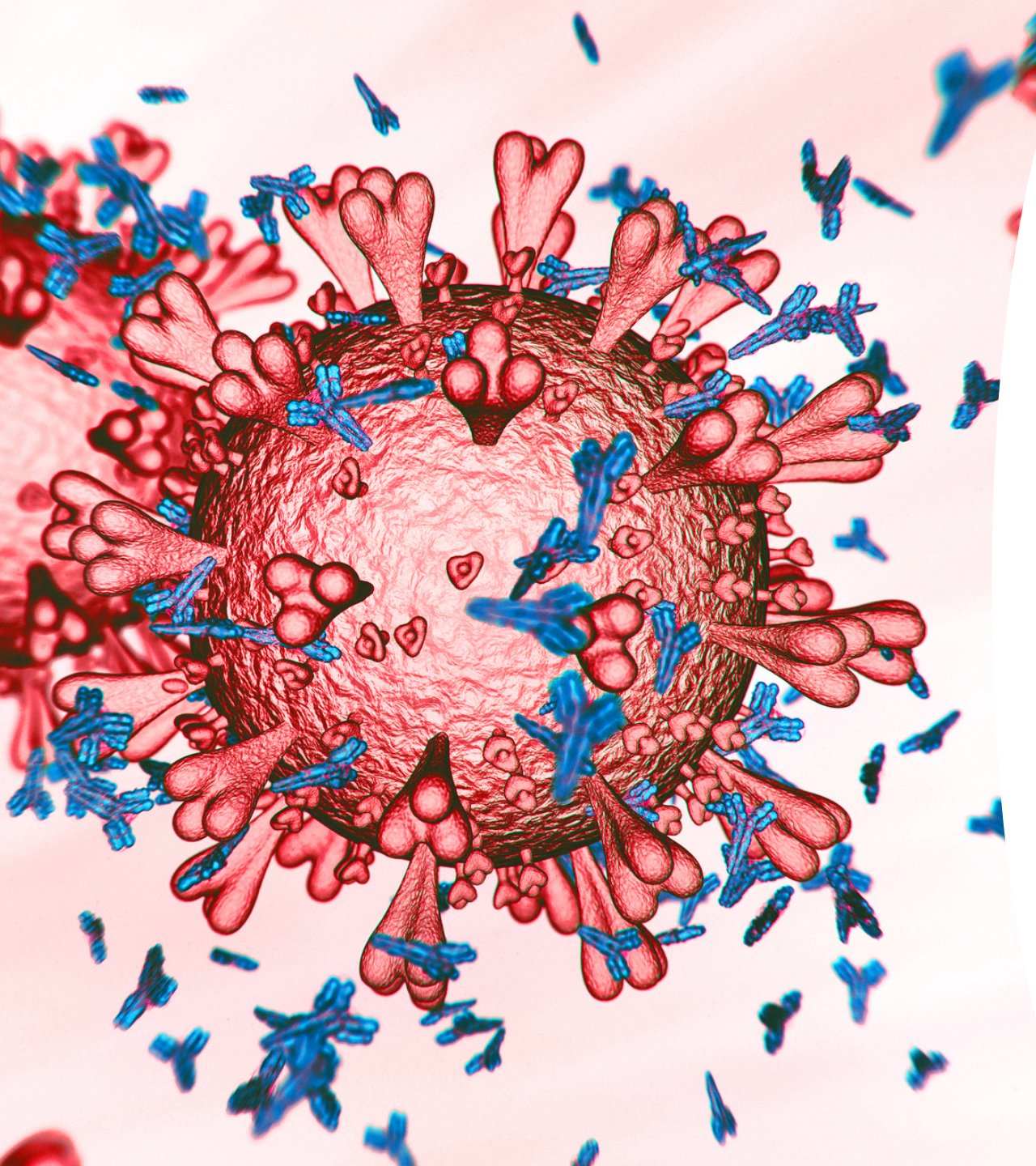
- Testing centres (NHS)
- Private tests available online from £79

### Why

- Give certainty – did I have COVID-19
- Have I built up antibodies?

### Accuracy

98% + sensitivity (98/100 who had it will receive a positive result).



## Antibody & Immunity

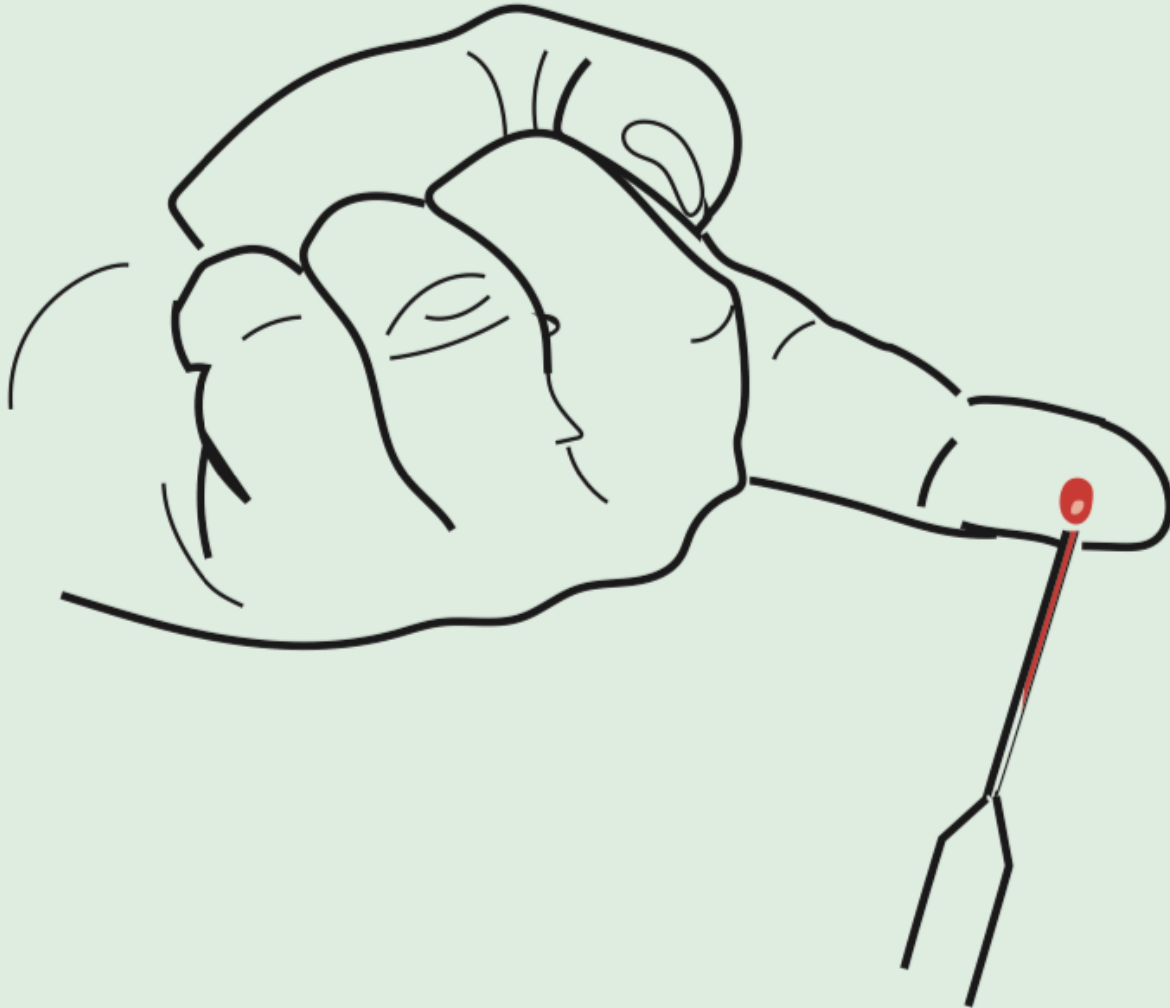
Does this mean I have immunity?

Scientists believe it is likely that you will have a degree of immunity, however we don't know for how long that immunity will protect the body from a second infection

What do we know from other Coronavirus outbreaks

Historical studies have indicated that people who survived the 2003 SARS outbreak have antibodies in their blood for years after recovery.

# 'Finger-prick' test taken at home



## Can I do the test at home?

### Lab analysed finger-prick kits

MHRA currently conducting a national review to ensure capillary blood collection is as accurate as venous.

Finger-kits likely to be a key part of Government testing strategy.

### Lateral flow devices

No lateral flow devices where you get an instant result have been approved by UK Gov.

Devices have currently not met accuracy standards.